



novacolor™

I colori dell'Architettura

Linea Sil

Pitture e rivestimenti silossanici
ad elevate prestazioni

High performance siloxane paints
and exterior coatings

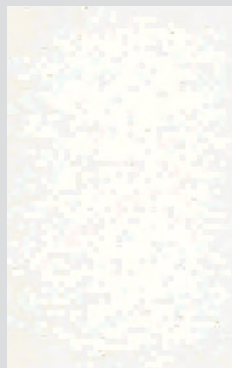
Linea Sil



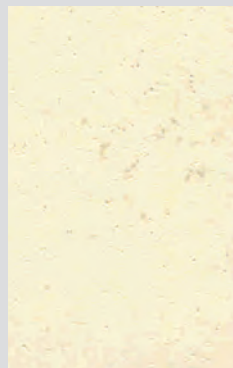
LS 134



LS 114



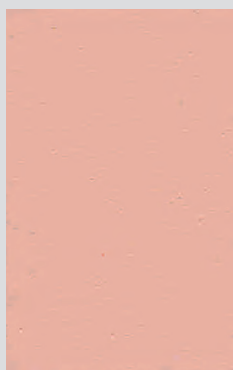
LS 123



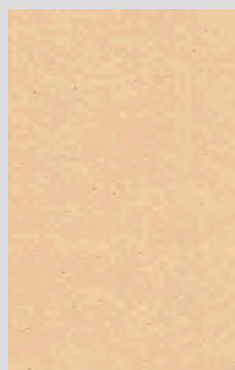
LS 144



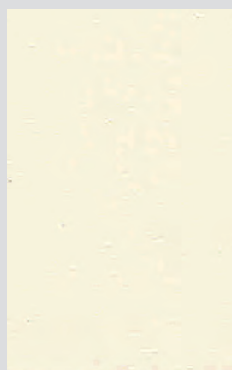
LS 104



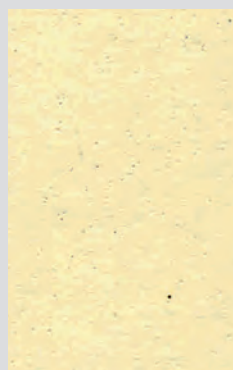
LS 133



LS 113



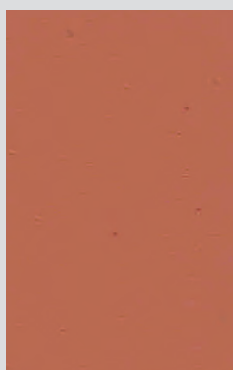
LS 122



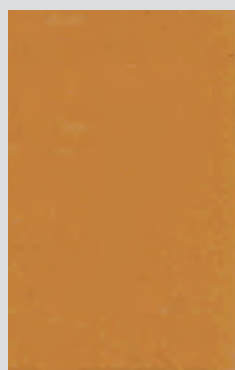
LS 143



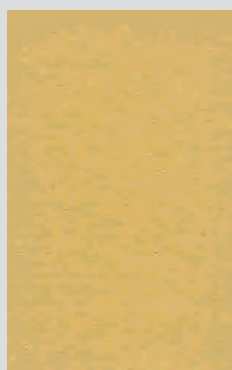
LS 103



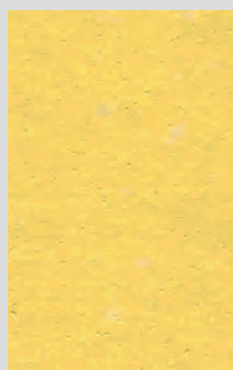
LS 131



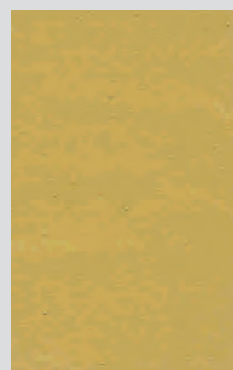
LS 111



LS 121



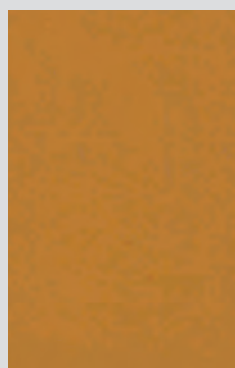
LS 141



LS 102



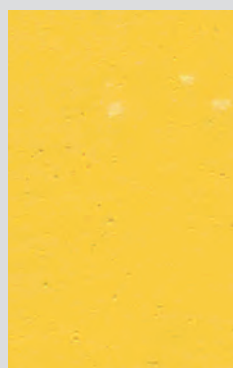
LS 130



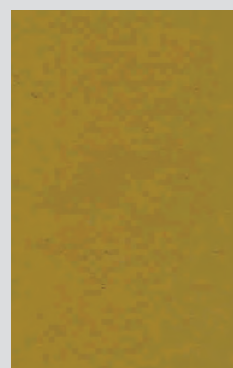
LS 110



LS 120



LS 140



LS 101

Le tonalità qui riprodotte, pur avvicinandosi il più possibile a quelle di fornitura, sono da considerarsi indicative. Per una corretta lettura dei colori si raccomanda di consultare questa cartella alla luce solare.

Linea Sil

PITTURE E RIVESTIMENTI SILOSSANICI

AD ELEVATE PRESTAZIONI

Linea Sil garantisce un'ottima protezione ed idrorepellenza, lasciando inalterata la permeabilità al vapore acqueo del supporto trattato.

HIGHLY PERFORMING SILOXANE

PAINTS AND COATINGS

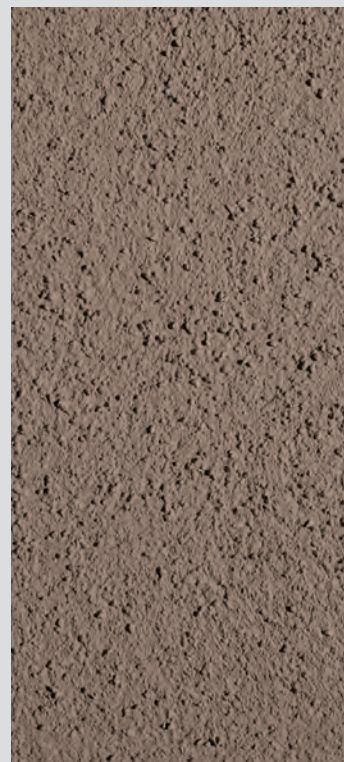
Linea Sil product line guarantees for a high protection and water-repellancy of the substrate, without affecting the water vapour permeability rate.



NOVASIL F con Fase Silossanica AP 6024
(AP Cartella colore/ color cart ANTICHE PATINE)



RUSTIKSIL FEIN IS 71



INTOSIL MEDIO IS 61

novacolor™

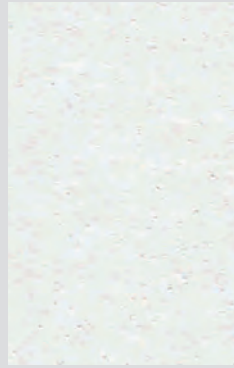
I colori dell'Architettura



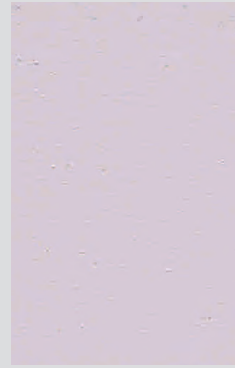
LS 84



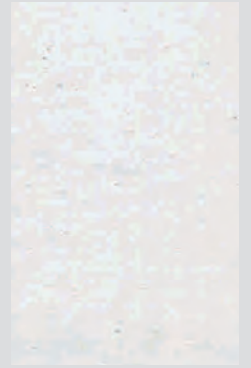
LS 94



LS 74



LS 64



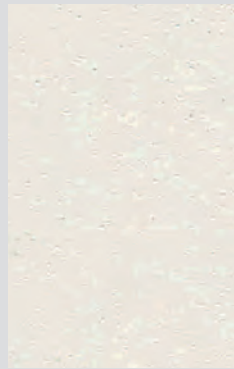
LS 54



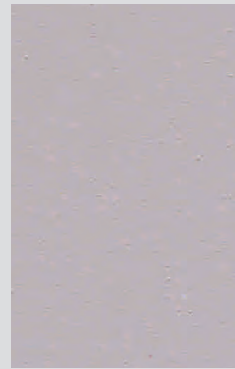
LS 83



LS 93



LS 73



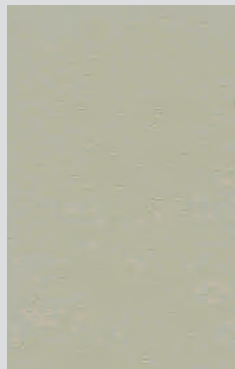
LS 63



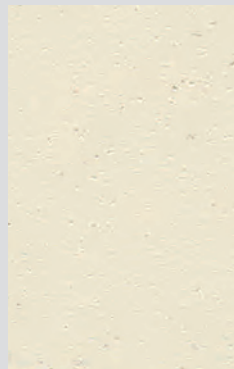
LS 53



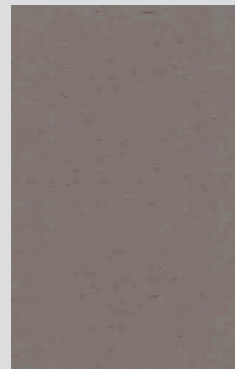
LS 82



LS 92



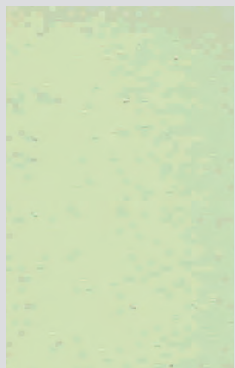
LS 71



LS 61



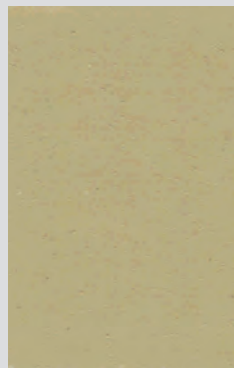
LS 51



LS 81



LS 91



LS 70

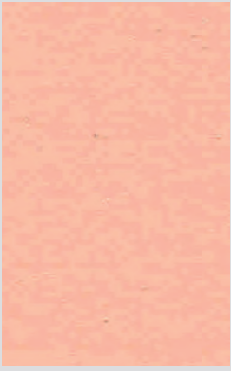


LS 60

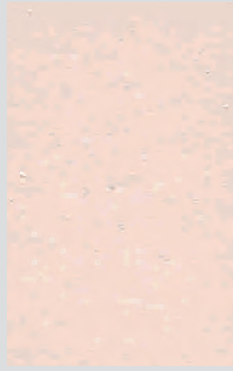


LS 50

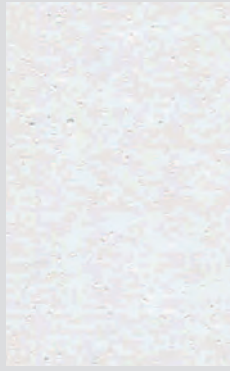
Linea Sil



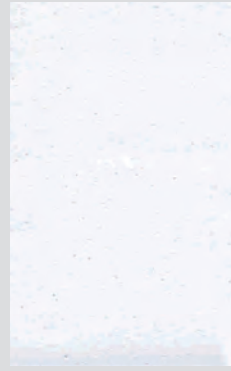
LS 44



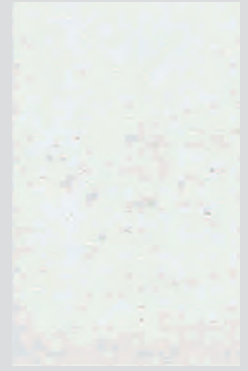
LS 34



LS 24



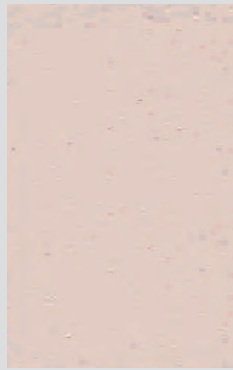
LS 14



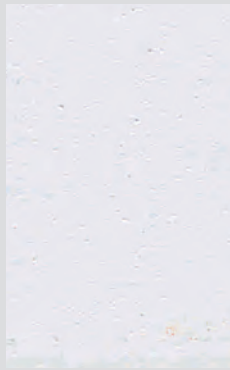
LS 5



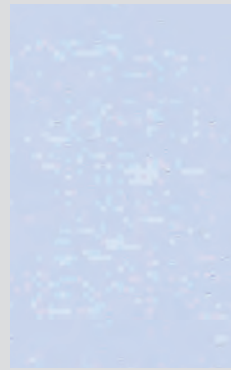
LS 43



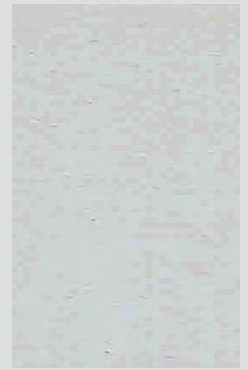
LS 33



LS 23



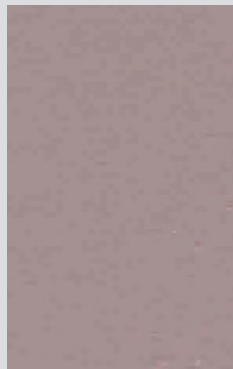
LS 13



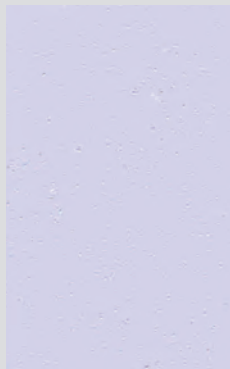
LS 4



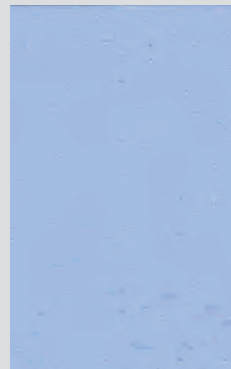
LS 41



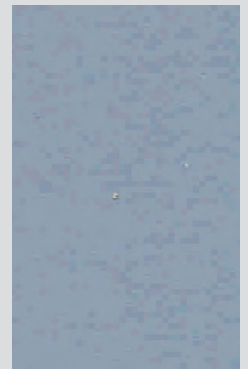
LS 31



LS 21



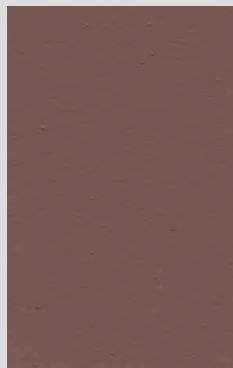
LS 11



LS 2



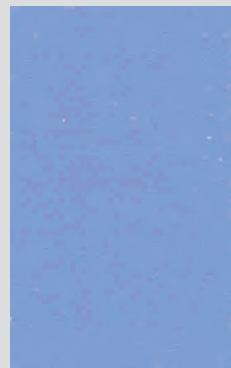
LS 40



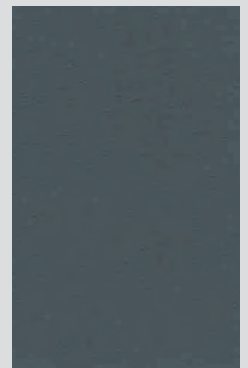
LS 30



LS 20



LS 10



LS 1

The below listed colors are very close to the original but must be nevertheless considered as approximate.
For a correct color reading, please consult this color card in sunlight.

Linea Sil

novacolor™
I colori dell'Architettura

PITTURE E RIVESTIMENTI SILOSSANICI AD ELEVATE PRESTAZIONI

Pitture e rivestimenti acrisilossanici in dispersione acquosa, che utilizzano le più elevate tecnologie nel campo delle finiture protettive degli intonaci. LineaSil garantisce un'eccezionale protezione ed idrorepellenza, lasciando inalterata la permeabilità al vapore acqueo del supporto trattato.

LineaSil è composta da:

- NovaSil, pittura acrisilossanica, a basso spessore.
- NovaSil F, microrivestimento silossanico con farina di quarzo
- RustikSil Fein e Medio, rivestimento silossanico spatolato a spessore, caricato con graniglie colorate di marmo e quarzo.
- IntoSil Medio, intonachino silossanico con struttura a "civile".
- IsoSilcolor primer pigmentato, a base di resine silossaniche in fase acquosa.
- Acquadivetro, consolidante e protettivo incolore a base di resine silossaniche in fase acquosa.

I prodotti della LineaSil consentono di ottenere finiture moderne di colore uniforme. Se abbinati al ciclo Antiche Patine (miscelate con Fase Silossanica) creano effetti di velatura colorata e semi-trasparente, in tutto simile alle antiche coloriture dei centri storici italiani.

ASPETTO: opaco, vellutato.

IMPIEGHI: protezione e coloritura d'intonaci vecchi e nuovi, intonaci deumidificanti, calcestruzzo, pitture e rivestimenti sintetici pre-esistenti. LineaSil di Novacolor è particolarmente indicata nei restauri cromatici dei centri storici; le resine silossaniche impiegate garantiscono una completa protezione del supporto dall'acqua piovana e contemporaneamente una perfetta permeabilità al vapore del rivestimento.

PREPARAZIONE DEL SUPPORTO: consolidare intonaci e pitture sfarinanti con IsoSilcolor primer pigmentato in fase acquosa.

APPLICAZIONE:

NovaSil e NovaSil F: diluire con acqua al 25-30% (NovaSil) - 15-20% (Novasil F) in entrambe le mani, intervallate di circa 12 ore l'una dall'altra. RustikSil Fein e Medio: applicare una mano di IsoSilcolor, primer silossanico pigmentato, dopo 12 ore, posare e rifinire RustikSil, in una sola mano, con cazzuola americana.

IntoSil Medio: applicare in due mani con spatola inox e rifinire con polistorolo, spatola inox o frattazzino in spugna morbido.

COLORI: Bianco, tinte di cartella Linea Sil e colori Progetto Colore. Sistema tintometrico Mixcolor di Novacolor.

HIGHLY PERFORMING SILOSSANE PAINTS AND COATINGS

Waterbased siloxane paints and coatings, based on the most updated technologies in the field of plaster protective coatings. LineaSil product line is water-repellent and protects the substrate without altering nor reducing its water vapour permeability rate.

LineaSil product line consists of:

- NovaSil, low thickness siloxane paint.
- NovaSil F, siloxane paint with quartz powder and marbles, with high filling power.
- RustikSil Fein and Medio, siloxane coating containing pigmented quartz and marble grains.
- IntoSil Medio, siloxane coating with "antique" texture.
- IsoSilcolor, water based, pigmented siloxane primer.
- Acquadivetro, transparent protective water based clear treatment formulated with special unsaponifiable siloxane copolymers.

LineaSil product line creates uniform and extremely modern aesthetic finishes. In combination with Antiche Patine (natural earth pigments for stains mixed with Fase Silossanica) they originate semi-transparent patinas, which resemble a lot the old colouring schemes, typical of most Italian historical town settings.

TEXTURE: matt, silky like finish.

USE: protection and decoration of new and pre-existing cement-based mortars and coatings, highly permeable exterior renderings, concrete, well adhering pre-existing synthetic water based paints and finishes. LineaSil by Novacolor is also recommended as the most suitable finish for the chromatic restoration of historical town settings: siloxane resins guarantee for high protection against rainfalls and excellent permeability of the substrate.

SUBSTRATE PREPARATION: chalking plasters and paints must be previously sealed with one coat of IsoSilcolor, water based, pigmented siloxane primer.

APPLICATION PROCEDURE:

NovaSil and NovaSil F: dilute with 25-30% of clean water (NovaSil) - 15-20% (Novasil F) in both coats. Wait roughly 12 hours, prior the application of the second one.

RustikSil Fein and Medio : apply one coat of IsoSilcolor, water based, pigmented siloxane primer. After 12 hours, apply RustikSil Fein or Medio in one single coat and level it with the inox trowel.

IntoSil Medio: apply in two coats with inox trowel. Smooth the second coat with an inox trowel, a felt trowel or polystyrene.

COLORS: White and Linea Sil color range; Progetto Colore. Tinting system Mixcolor by Novacolor.

novacolor.it

NOVACOLOR s.r.l.

47121 Forlì - Italia - Via A. Spallicci, 16

Tel. +39 0543 401840 - Fax +39 0543 414585

info@novacolor.it

AZIENDA CON SISTEMA DI GESTIONE QUALITÀ
UNI EN ISO 9001: 2000
CERTIFICATO DA CERTIQUALITY

MADE IN ITALY



NOVACOLOR is committed
to reduce the environmental impact
by producing friendly materials.